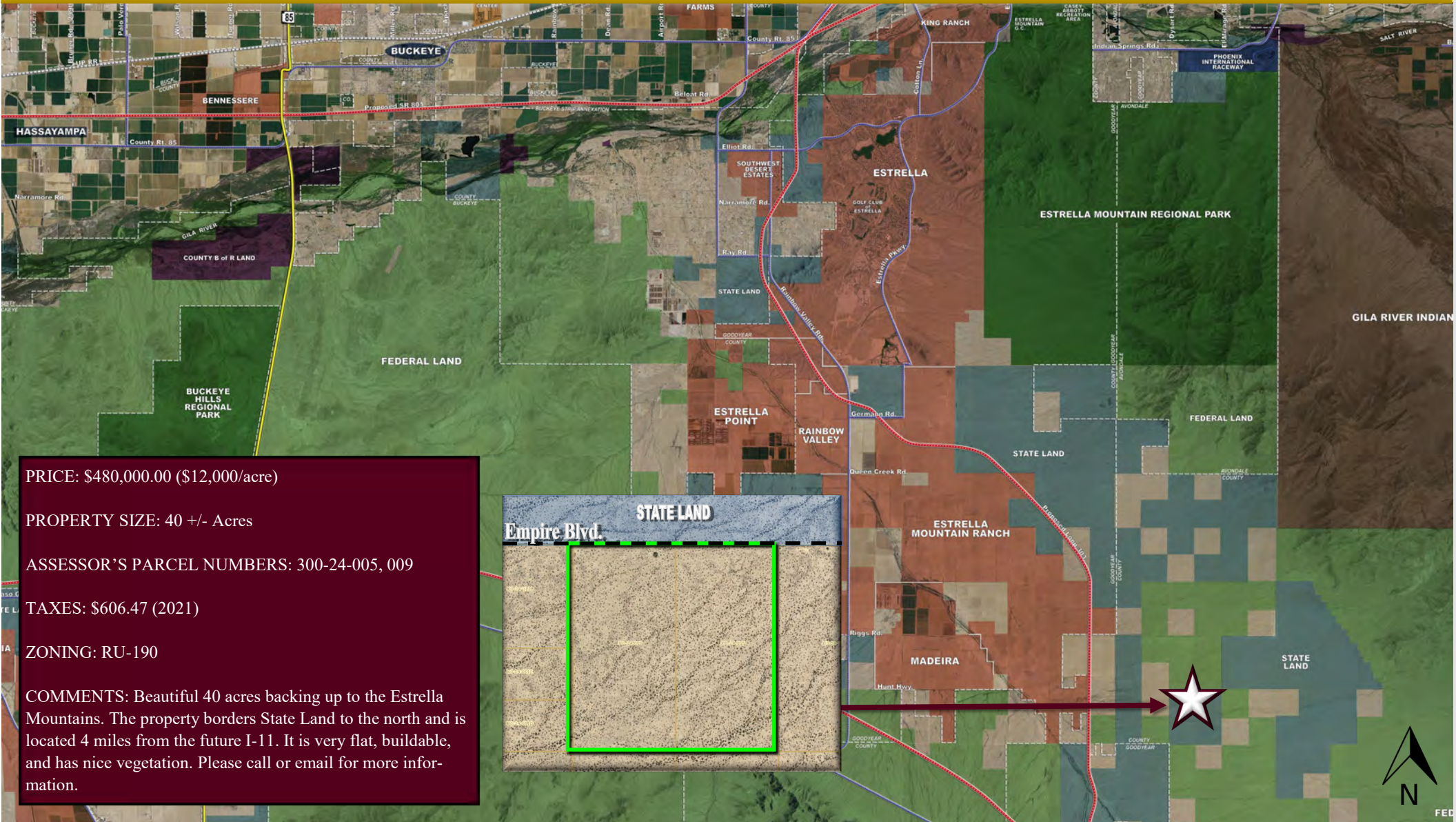
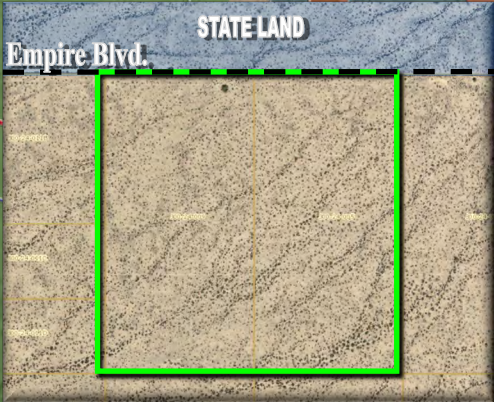


115TH AVENUE ALIGNMENT & EMPIRE BOULEVARD GOODYEAR, ARIZONA



PRICE: \$480,000.00 (\$12,000/acre)
PROPERTY SIZE: 40 +/- Acres
ASSESSOR'S PARCEL NUMBERS: 300-24-005, 009
TAXES: \$606.47 (2021)
ZONING: RU-190
COMMENTS: Beautiful 40 acres backing up to the Estrella Mountains. The property borders State Land to the north and is located 4 miles from the future I-11. It is very flat, buildable, and has nice vegetation. Please call or email for more information.



SCOTT TRUITT - DESIGNATED BROKER
8040 E MORGAN TRAIL, SUITE 22
SCOTTSDALE, ARIZONA 85258

OFFICE: 623-977-4900
MOBILE: 602-622-9099
FAX: 888-901-4243

TRUITT@WESTERNLANDCO.NET

INTERSTATE 11 ROUTE



SCOTT TRUITT - DESIGNATED BROKER
8040 E MORGAN TRAIL, SUITE 22
SCOTTSDALE, ARIZONA 85258

TRUITT@WESTERNLANDCO.NET

OFFICE: 623-977-4900
MOBILE: 602-622-9099
FAX: 888-901-4243

115TH AVENUE ALIGNMENT & EMPIRE BOULEVARD GOODYEAR, ARIZONA



SCOTT TRUITT - DESIGNATED BROKER
8040 E MORGAN TRAIL, SUITE 22
SCOTTSDALE, ARIZONA 85258

OFFICE: 623-977-4900
MOBILE: 602-622-9099
FAX: 888-901-4243

TRUITT@WESTERNLANDCO.NET