

411TH AVENUE & INTERSTATE 10 TONOPAH, ARIZONA



DETAILS

- SIZE: 121 +/- acres
- PRICE: \$40,000 per acre (\$4,848,800.00)
- PARCEL NUMBERS: 506-34-013, 032B, 034B, and 034C
- ZONING: RU-43

SCOTT TRUITT - DESIGNATED BROKER

✉ TRUITT@WESTERNLANDCO.NET

🌐 WWW.WESTERNLANDCO.NET

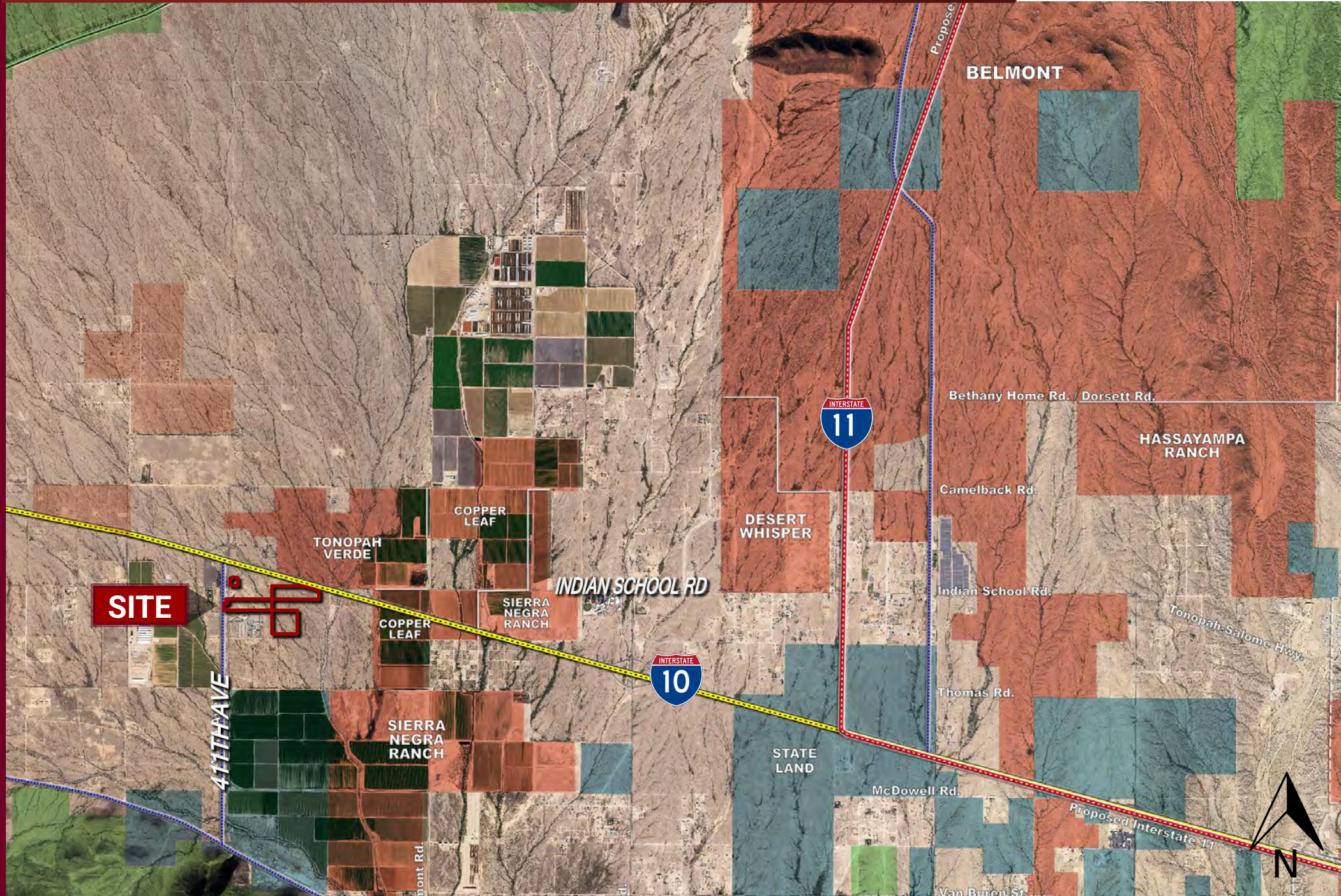
📞 O: 623-977-4900 M: 602-622-9099 F: 888-901-4243



HIGHLIGHTS

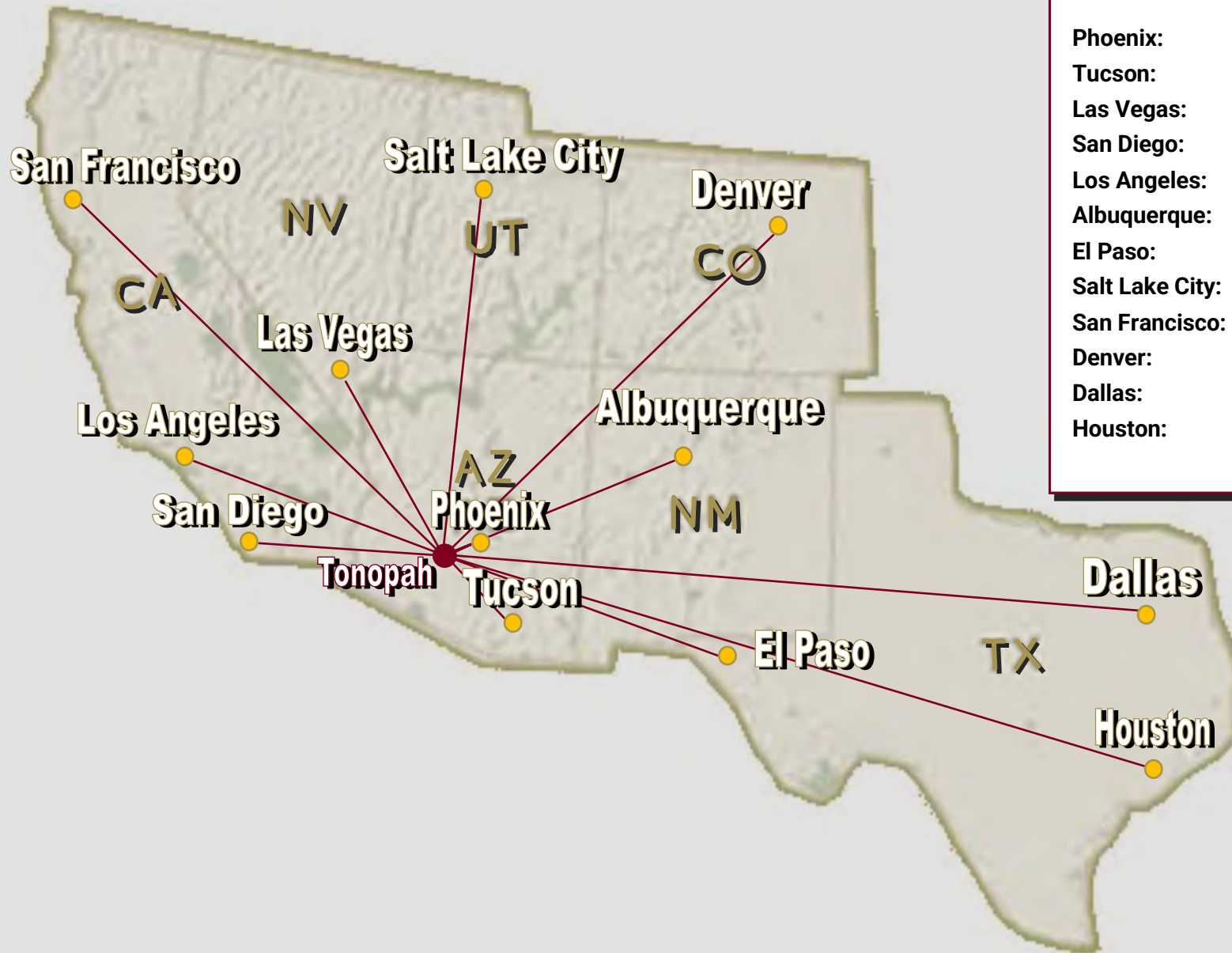
- Fantastic investment or industrial opportunity off of Interstate 10.
- Easy access with a built out traffic interchange at 411th Avenue and I-10.
- Multiple planned communities within close range of the property.

411TH AVENUE & INTERSTATE 10 TONOPAH, ARIZONA



Notice: All information contained herein is based upon information and sources deemed to be reliable, however, Western Land Company, LLC., its Owners, Designated Broker, Officers or Assigns, and Sales Associates will not be held responsible for any inaccuracies; further, it is recommended to all parties to satisfy themselves as to the accuracy of all information provided.

DISTANCE AND DRIVE TIME TO MAJOR CITIES



Phoenix:	53 miles / 58 minutes
Tucson:	173 miles / 2.3 hours
Las Vegas:	279 miles / 4.30 hours
San Diego:	313 miles / 4.5 hours
Los Angeles:	320 miles / 4.5 hours
Albuquerque:	468 miles / 7.2 hours
El Paso:	481 miles / 7.3 hours
Salt Lake City:	699 miles / 10.21 hours
San Francisco:	701 miles / 10.3 hours
Denver:	862 miles / 13.15 hours
Dallas:	1,116 miles / 15.5 hours
Houston:	1,227 miles / 17 hours



SCOTT TRUITT - OWNER/DESIGNATED BROKER
8040 E MORGAN TRAIL, SUITE 22
SCOTTSDALE, AZ 85258

OFFICE: 623-977-4900
MOBILE: 602-622-9099
FAX: 888-901-4243

TRUITT@WESTERNLANDCO.NET

Notice: All information contained herein is based upon information and sources deemed to be reliable, however, Western Land Company, LLC., its Owners, Designated Broker, Officers or Assigns, and Sales Associates will not be held responsible for any inaccuracies; further, it is recommended to all parties to satisfy themselves as to the accuracy of all information provided.

411TH AVENUE & INTERSTATE 10 TONOPA, ARIZONA



Notice: All information contained herein is based upon information and sources deemed to be reliable, however, Western Land Company, LLC., its Owners, Designated Broker, Officers or Assigns, and Sales Associates will not be held responsible for any inaccuracies; further, it is recommended to all parties to satisfy themselves as to the accuracy of all information provided.