

CEMETERY ROAD & INTERSTATES 8

GILA BEND, ARIZONA



PRICE: \$270,000.00

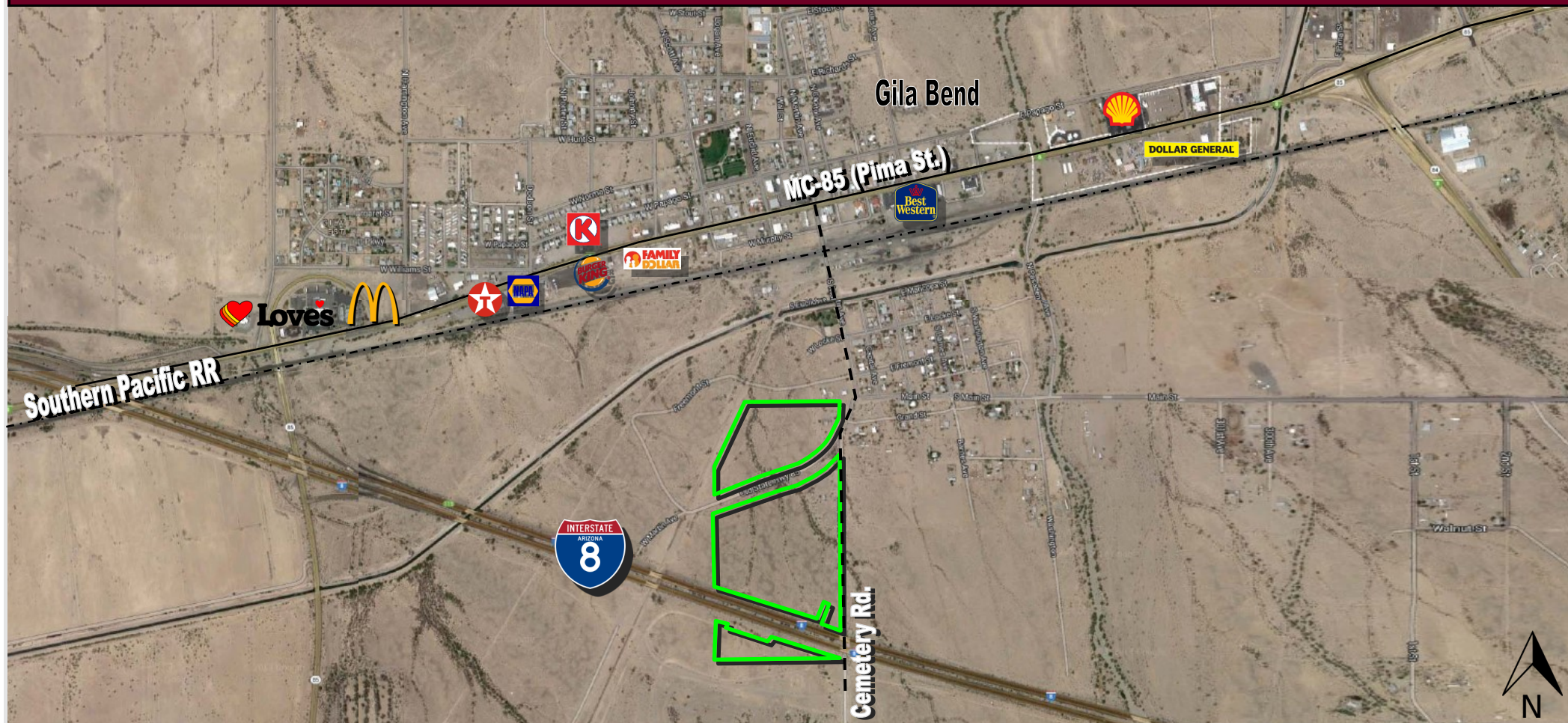
ASSESSOR'S PARCEL NUMBERS: 403-55-004C

ZONING: AG

PROPERTY SIZE: 60 +/- Acres

UTILITIES: Power: APS - Phone: CenturyLink - Water/Sewer: Town of Gila Bend

COMMENTS: Well located, flat and buildable property with frontage on Interstate 8. Town of Gila Bend water line and sewer are adjacent to the property! Priced to sell! Please call or email with any questions.



SCOTT TRUITT - DESIGNATED BROKER
8040 EAST MORGAN TRAIL, SUITE 22
SCOTTSDALE, ARIZONA 85258

OFFICE: 623-977-4900
MOBILE: 602-622-9099
FAX: 888-901-4243

TRUITT@WESTERNLANDCO.NET

CEMETERY ROAD & INTERSTATE 8

GILA BEND, ARIZONA



SCOTT TRUITT - DESIGNATED BROKER
8040 EAST MORGAN TRAIL, SUITE 22
SCOTTSDALE, ARIZONA 85258

TRUITT@WESTERNLANDCO.NET

OFFICE: 623-977-4900
MOBILE: 602-622-9099
FAX: 888-901-4243

CEMETERY ROAD & INTERSTATE 8 GILA BEND, ARIZONA



SCOTT TRUITT - DESIGNATED BROKER
8040 EAST MORGAN TRAIL, SUITE 22
SCOTTSDALE, ARIZONA 85258

OFFICE: 623-977-4900
MOBILE: 602-622-9099
FAX: 888-901-4243

TRUITT@WESTERNLANDCO.NET

Notice: All information contained herein is based upon information and sources deemed to be reliable, however, Western Land Company, LLC., its Owners, Designated Broker, Officers or Assigns, and Sales Associates will not be held responsible for any inaccuracies; further, it is recommended to all parties to satisfy themselves as to the accuracy of all information provided.