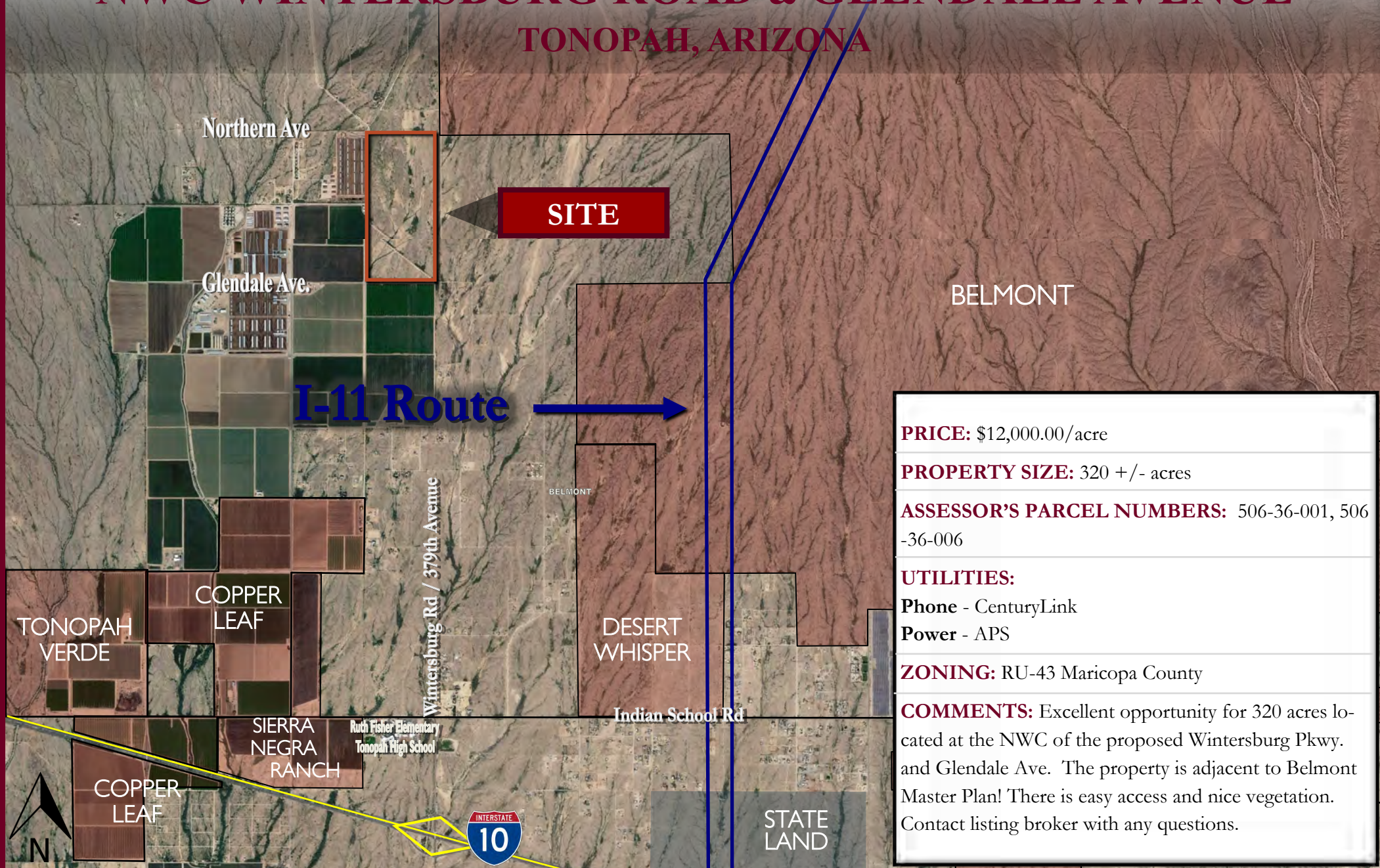


NWC WINTERSBURG ROAD & GLENDALE AVENUE

TONOPAH, ARIZONA



PRICE: \$12,000.00/acre

PROPERTY SIZE: 320 +/- acres

ASSESSOR'S PARCEL NUMBERS: 506-36-001, 506-36-006

UTILITIES:

Phone - CenturyLink

Power - APS

ZONING: RU-43 Maricopa County

COMMENTS: Excellent opportunity for 320 acres located at the NWC of the proposed Wintersburg Pkwy. and Glendale Ave. The property is adjacent to Belmont Master Plan! There is easy access and nice vegetation. Contact listing broker with any questions.



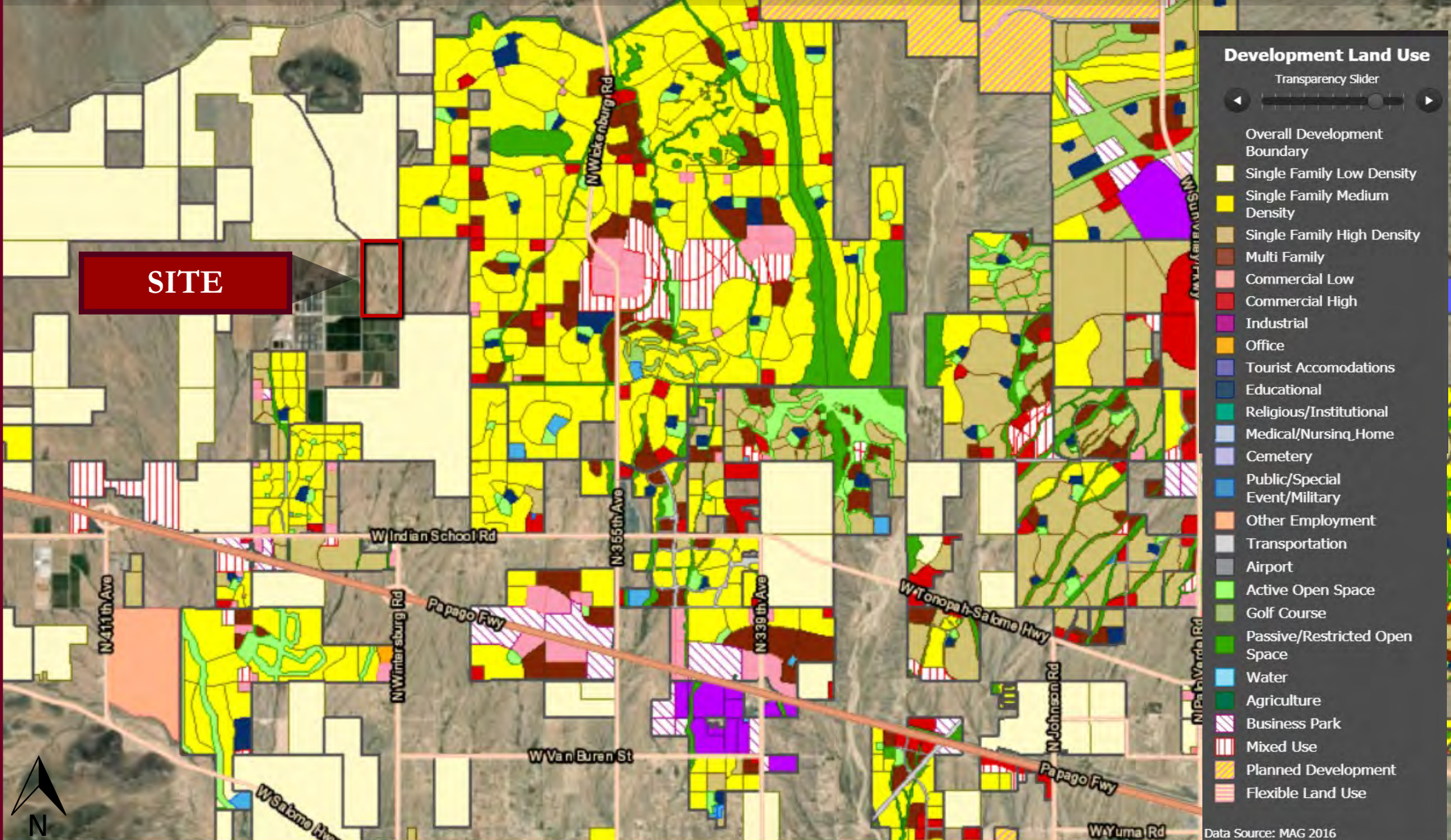
SCOTT TRUITT - DESIGNATED BROKER
8040 E MORGAN TRAIL, SUITE 22
SCOTTSDALE, ARIZONA 85258

OFFICE: 623-977-4900
MOBILE: 602-622-9099
FAX: 888-901-4243

TRUITT@WESTERNLANDCO.NET

NWC WINTERSBURG ROAD & GLENDALE AVENUE

LAND USE PLAN



- ### Development Land Use
- Transparency Slider
- Overall Development Boundary
 - Single Family Low Density
 - Single Family Medium Density
 - Single Family High Density
 - Multi Family
 - Commercial Low
 - Commercial High
 - Industrial
 - Office
 - Tourist Accomodations
 - Educational
 - Religious/Institutional
 - Medical/Nursing Home
 - Cemetery
 - Public/Special Event/Military
 - Other Employment
 - Transportation
 - Airport
 - Active Open Space
 - Golf Course
 - Passive/Restricted Open Space
 - Water
 - Agriculture
 - Business Park
 - Mixed Use
 - Planned Development
 - Flexible Land Use

Data Source: MAG 2016

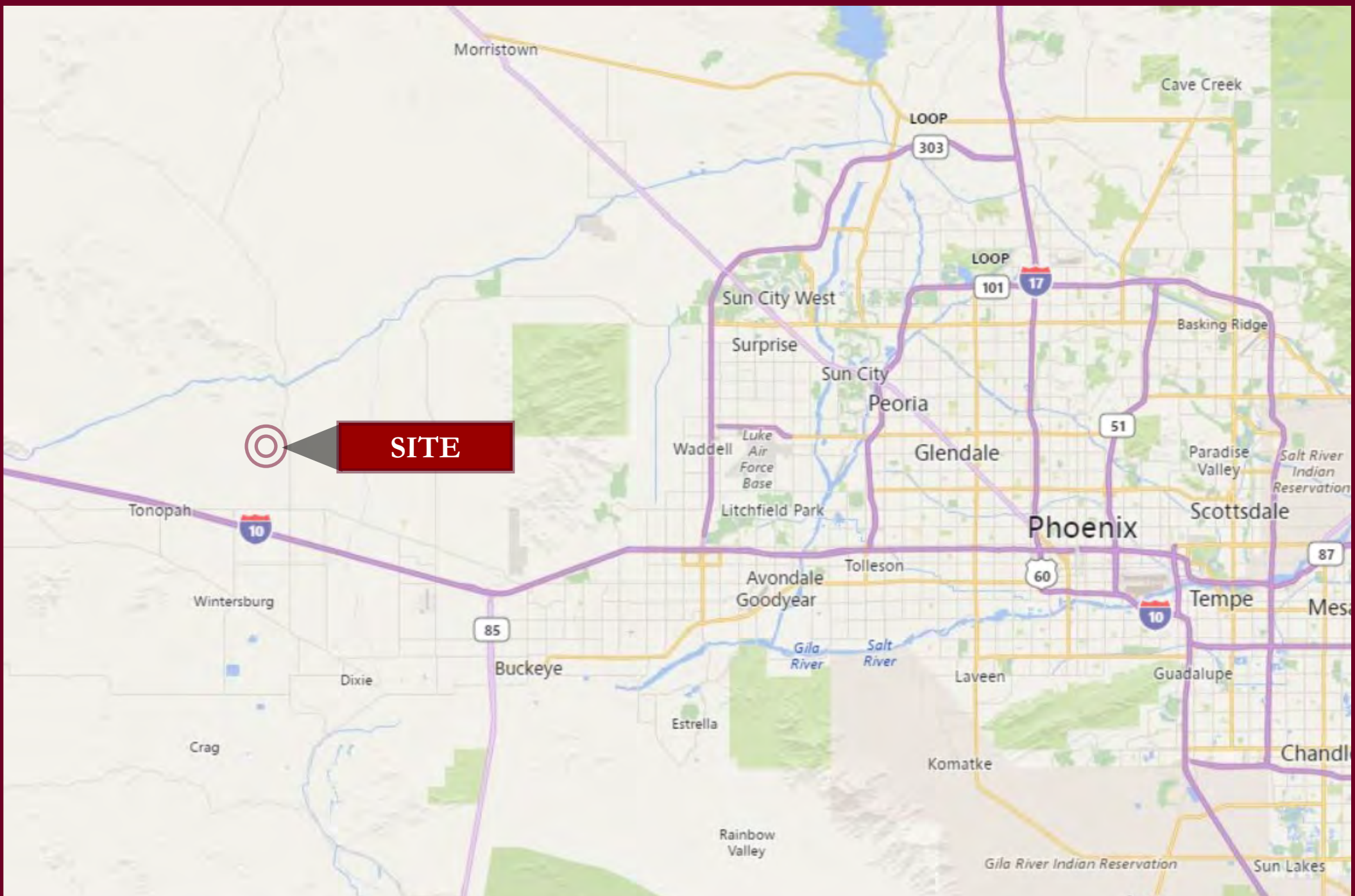


SCOTT TRUITT - DESIGNATED BROKER
8040 E MORGAN TRAIL, SUITE 22
SCOTTSDALE, ARIZONA 85258

OFFICE: 623-977-4900
MOBILE: 602-622-9099
FAX: 888-901-4243

TRUITT@WESTERNLANDCO.NET

Notice: All information contained herein is based upon information and sources deemed to be reliable, however, Western Land Company, LLC., its Owners, Designated Broker, Officers or Assigns, and Sales Associates will not be held responsible for any inaccuracies; further, it is recommended to all parties to satisfy themselves as to the accuracy of all information provided.



SITE



SCOTT TRUITT - DESIGNATED BROKER
8040 E MORGAN TRAIL, SUITE 22
SCOTTSDALE, ARIZONA 85258

OFFICE: 623-977-4900
MOBILE: 602-622-9099
FAX: 888-901-4243

TRUITT@WESTERNLANDCO.NET

Notice: All information contained herein is based upon information and sources deemed to be reliable, however, Western Land Company, LLC., its Owners, Designated Broker, Officers or Assigns, and Sales Associates will not be held responsible for any inaccuracies; further, it is recommended to all parties to satisfy themselves as to the accuracy of all information provided.